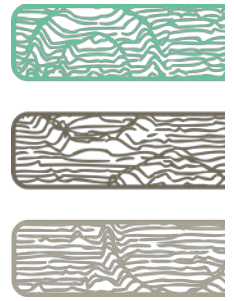
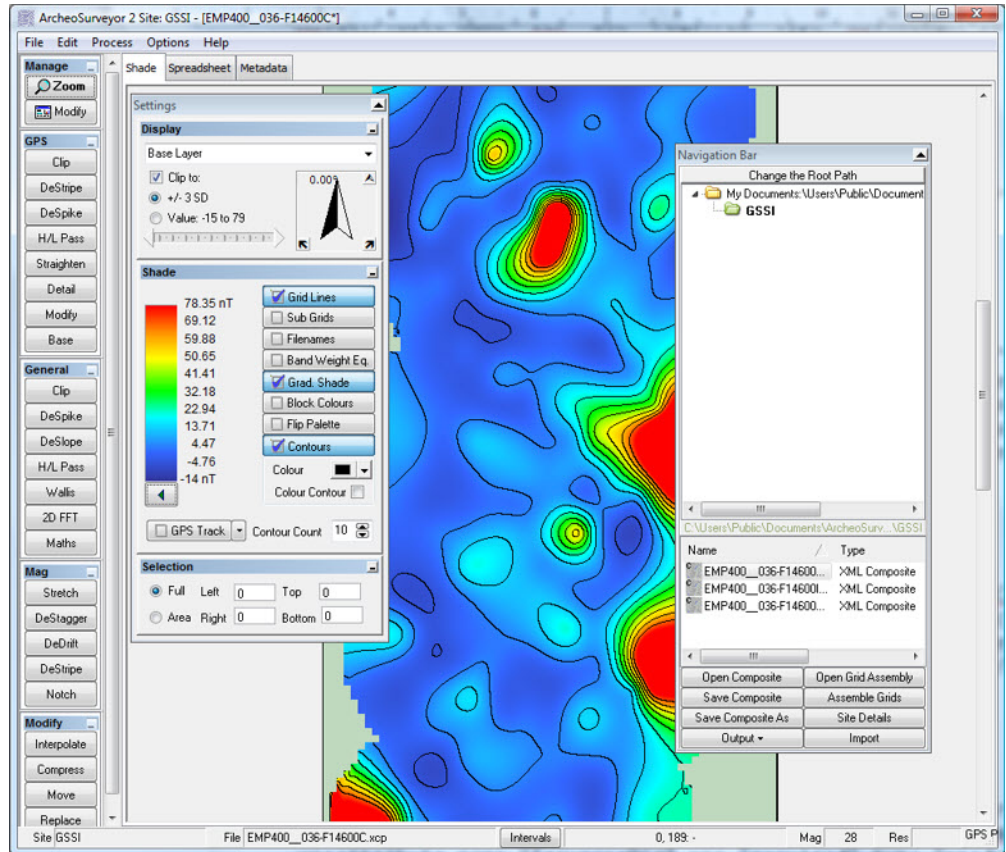


# ArcheoSurveyorLite

Data processing software for  
**GSSI Profiler EMP-400**



- Read Grid and GPS based files from GSSI Profiler EMP-400
- Separate data by Frequency & Mode
- Assemble grids into composites
- Clean-up & enhance data in a visual interface
- Save results to Georeferenced image files.



Archeo**Surveyor**Lite has been designed to provide GSSI Profiler EMP-400 users with all the data processing they need, with specific emphasis on handling the practical aspects of data collection in the field.

Archeo**Surveyor**Lite fully understands the files generated by Profiler and extracts the data for each frequency & mode combination out into a separate file. GPS positioned data files are converted direct to composites, grid files must be assembled into composites by hand using a simple drag-and-drop tool. The composites can then be opened as shade plots.

Extensive data processing facilities are provided that are specifically tailored to the problems that commonly occur with field data collection. Other processes aid in enhancing features detected by Profiler. A special range of GPS-specific processes can be used on data when applicable.

Images created with Archeo**Surveyor**Lite can be printed, exported or saved in a variety of formats. Georeferencing is supported when the data and format allows.

Because the file format for composites stores only the source data plus information about any applied processes, these can be changed at any time, allowing complete control over the results. The file format is XML based to help future-proof your data.



# Processes

- Clip
- DeStripe
- DeSpike
- Deslope
- DeStagger
- DeDrift
- Stretch
- Edge Match / Range Match
- Interpolate
- Wallis Filter
- 2D FFT Filter
- Notch (periodic) Filter
- High / Low Pass Filter
- Compress
- Move
- Basic Maths (+-\*/ etc.)
- Search & Replace

row/col	12	13	14	15	16	17	18	19	20	21	22	23	24
0	2092499	-	-	-	-	-	-	-1.78	-1.37	-0.94	-0.52	-0.11	0.25
1	2092500	-	-	-	-	-2.72	-2.35	-1.94	-1.50	-1.03	-0.57	-0.12	0.28
2	2092501	-	-	-	-3.35	-2.99	-2.58	-2.14	-1.65	-1.14	-0.62	-0.12	0.33
3	2092502	-	-	-	-3.72	-3.32	-2.87	-2.38	-1.84	-1.26	-0.67	-0.10	0.39
4	2092503	-	-	-4.56	-4.18	-3.73	-3.24	-2.68	-2.08	-1.41	-0.72	-0.07	0.47
5	2092504	-	-	-5.16	-4.74	-4.25	-3.70	-3.08	-2.40	-1.61	-0.81	-0.04	0.55
6	2092505	-	-	-5.87	-5.42	-4.91	-4.32	-3.64	-2.85	-1.91	-0.99	-0.02	0.62
7	2092506	-	-	-6.68	-6.25	-5.74	-5.14	-4.41	-3.52	-2.37	-1.17	-0.05	0.65
8	2092507	-	-	-7.59	-7.20	-6.75	-6.20	-5.46	-4.45	-3.05	-1.52	-0.12	0.65
9	2092508	-	-8.81	-8.54	-8.23	-7.88	-7.44	-6.74	-5.64	-3.94	-2.00	-0.24	0.62
10	2092509	-	-9.64	-9.45	-9.25	-9.04	-8.75	-8.14	-6.98	-5.00	-2.61	-0.42	0.56
11	2092510	-	-10.35	-10.23	-10.15	-10.08	-9.93	-9.44	-8.29	-6.13	-3.34	-0.76	0.35
12	2092511	-	-10.87	-10.82	-10.82	-10.86	-10.84	-10.46	-9.38	-7.20	-4.26	-1.46	-0.29
13	2092512	-	-11.15	-11.16	-11.21	-11.32	-11.38	-11.09	-10.12	-8.12	-5.38	-2.78	-1.50
14	2092513	-	-11.19	-11.21	-11.31	-11.45	-11.55	-11.36	-10.55	-8.86	-6.56	-4.35	-3.06
15	2092514	-	-10.94	-10.98	-11.09	-11.26	-11.38	-11.27	-10.67	-9.39	-7.60	-5.81	-4.57
16	2092515	-	-10.42	-10.46	-10.57	-10.73	-10.85	-10.82	-10.41	-9.53	-8.21	-6.83	-5.71
17	2092516	-	-9.64	-9.66	-9.73	-9.84	-9.93	-9.92	-9.66	-9.09	-8.22	-7.23	-6.32
18	2092517	-	-8.63	-8.60	-8.59	-8.60	-8.53	-8.34	-8.00	-7.49	-6.90	-6.31	-5.90
19	2092518	-	-7.46	-7.35	-7.23	-7.11	-6.96	-6.79	-6.51	-6.43	-6.26	-6.08	-5.90
20	2092519	-	-6.21	-6.02	-5.79	-5.52	-5.22	-4.94	-4.76	-4.72	-4.86	-5.09	-5.36

Spreadsheet

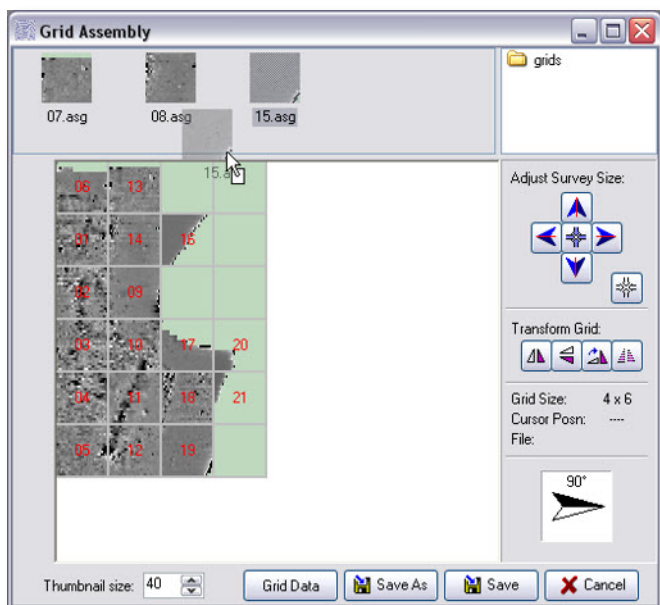
# Specifications & Requirements

ArcheoSurveyorLite is designed for Windows XP and Vista. Datasets of over 8 million datapoints have been successfully processed. Though the program will run on systems with minimal resources, composites - especially large ones - will consume memory. The PC's speed and memory will therefore affect the processing speed.

# Support

ArcheoSurveyorLite is provided complete with example datasets, an extensive PDF manual and context-sensitive help for all views, dialogs, etc.

The program is continually being improved with features and support for new file formats being added regularly. All updates and technical support are free. DWConsulting strives to provide the best possible support to it's customers. Improvements and corrections requested by users are often available within 24 hours.



Grid Assembly

ArcheoSurveyorLite is a limited functionality version of ArcheoSurveyor, the full featured version of the program used extensively in archaeological and shallow geophysics. Files produced are fully interchangeable between both versions and ArcheoSurveyorLite can be easily upgraded to ArcheoSurveyor. Contact DW Consulting for details.

Limitations include: Single Document Interface, No import or download (beyond GSSI specific files), No trace, delta, 3D, relief & publish views, No macro, mask or annotation processes.

Field	Value
Dir. of 1st Traverse	90 deg Dummy val. 32000
Surveyors	
Description	
Survey Date	31/08/2006
Posn	E 420347.1875 m N 2092499.5 m Zone
Assembler	
Units	Instrument: GSSI Profiler EMP-400
Assembly Date	17/05/2010
Comments	User Notes, - Power low BAT_BIT = 0x08; - ADC calibration failed ADC_BIT = 0x10; - Transmitter failed TNS_BIT = 0x20; - Noise test failed NEF_BIT = 0x40;
Last Process Date	30/12/1999
Palette	
Linear Units	m
Include in Site Totals	<input type="checkbox"/>
SITE Name	GSSI
Location	
MapRef	
COMPOSITE Filename	C:\Users\l.david\Documents\ArcheoSurveyor\GSSI\comp\EMP400_036EMP400_036-F14600C.xcp

MetaData

Contact:  
**DW Consulting** • Boekweitakker 28 • 3773 BX Barneveld • The Netherlands  
 Tel: +31 (0)342 422338 • info@dwconsulting.nl • www.dwconsulting.nl  
**GSSI** • 12 Industrial Way • Salem • NH 03079 • USA  
 Tel: 603-893-1109 • sales@geophysical.com • www.geophysical.com

