

Complete GPR Systems for Concrete Inspection

StructureScan™ Mini

www.geophysical.com

The StructureScan Mini is GSSI's original, all-in-one GPR system for concrete inspection. This hand held system locates rebar, conduits, post-tension cables, voids and can be used to determine concrete slab thickness in real-time.

The StructureScan Mini safely locates metallic and non-metallic targets within concrete structures up to a depth of 20 inches (50 cm). The StructureScan Mini is offered in two versions— the original or the StructureScan Mini with 3D.



- 1 All-in-One handheld GPR system
- 2 Ergonomic handle and controls
- 3 Easy to use operator interface with color display
- 4 Survey wheel encoder
- 5 Guiding laser for locating and 3D surveying

Integrated, Compact Design

The StructureScan Mini makes concrete inspection easy in tight spaces, or above-the-head survey locations

All-in-one concrete inspection tool - antenna, positioning system and control unit combo

System Flexibility

The StructureScan Mini is offered in two versions, a 2D data collection mode for real-time results and a 3D data collection mode for advanced interpretation

Durability

Ruggedized plastic casing and wheels for long-lasting performance

Value

A high-end system at an entry level price

Two-year warranty



"The lasers in the StructureScan Mini are great when marking out rebar, especially when we're at a job site with bad lighting."

Chase Johnson, GPRS San Francisco

StructureScan Mini Solutions

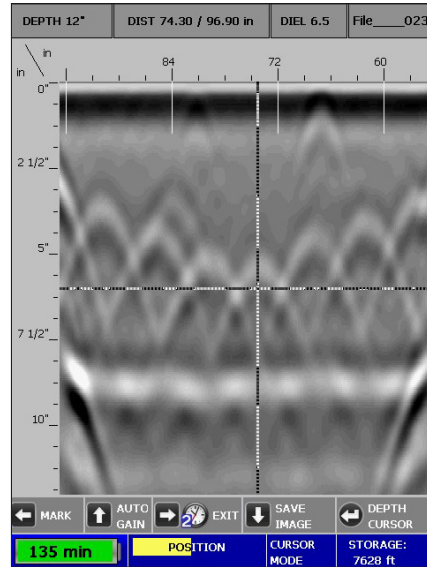
Use the StructureScan Mini for locating rebar and conduits, post-tension cables, voids and concrete cover information. Reach depths of up to 20 inches (50 cm) for assessment of reinforced concrete structures. Collect concrete data and save it directly onto the internal memory. Best of all, view your data via the ultra-crisp, LED backlit 5.7 inch (14.5 cm) screen on our portable StructureScan system.

The StructureScan Mini weighs about three pounds, making it conveniently portable while going to various job sites. This generation of GPR incorporates two types of automatic target detection to aid users in interpreting data. The StructureScan Mini also includes an integrated laser positioning system, located on the front and sides of the unit to help users accurately mark targets.

Locate Rebar and Conduits: Concrete and construction professionals use ground penetrating radar to safely locate targets within poured concrete prior to drilling, cutting or coring. Take advantage of automatically locating targets in real time.

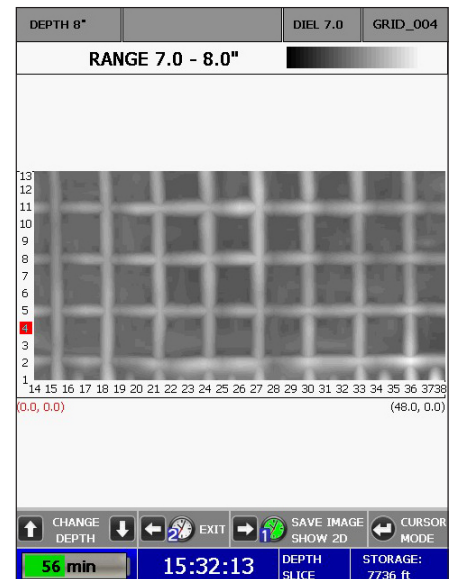
Establish Location and Depth of Post-Tension Cables in Concrete with GPR: StructureScan Mini helps concrete professionals and contractors find the location and depth of post-tension cables. Let StructureScan Mini identify the characteristics of the survey area, such as where the cables drape, for added safety.

Detect the Thickness of a Concrete Slab with GPR: Contractors and engineers alike use StructureScan Mini to determine the thickness of suspended or on-grade concrete slabs.



Data showing small plastic conduits over rebar mat.

Data showing a 3D image of a rebar mat.



Systems Include

- StructureScan Mini
- Dual battery charger
- Two batteries
- Hand strap
- Transit case
- Quick Start Guide
- Training Video
- Data collection grids (3D system)
- 2-year warranty

System Specifications

| | |
|----------------------------|---|
| Center Frequency | 1600 MHz |
| Depth Range | Up to 20 inches (50 cm) |
| Unit Weight (with battery) | 3.6 pounds (1.63 kg) |
| Dimensions | 6 (w) x 7 (h) x 9 (l) in. 15.24 x 17.78 x 22.86 cm |
| Languages | English, Spanish, French |
| Environmental | IP-65 |

sales@geophysical.com

40 Simon Street • Nashua, NH 03060-3075
Tel: 603.893.1109 • Toll Free: 800.524.3011 • Fax: 603.889.3984

Geophysical Survey Systems, Inc.

Copyright © 2015-2016 All Rights Reserved
Geophysical Survey Systems, Inc.
01.14.2016